





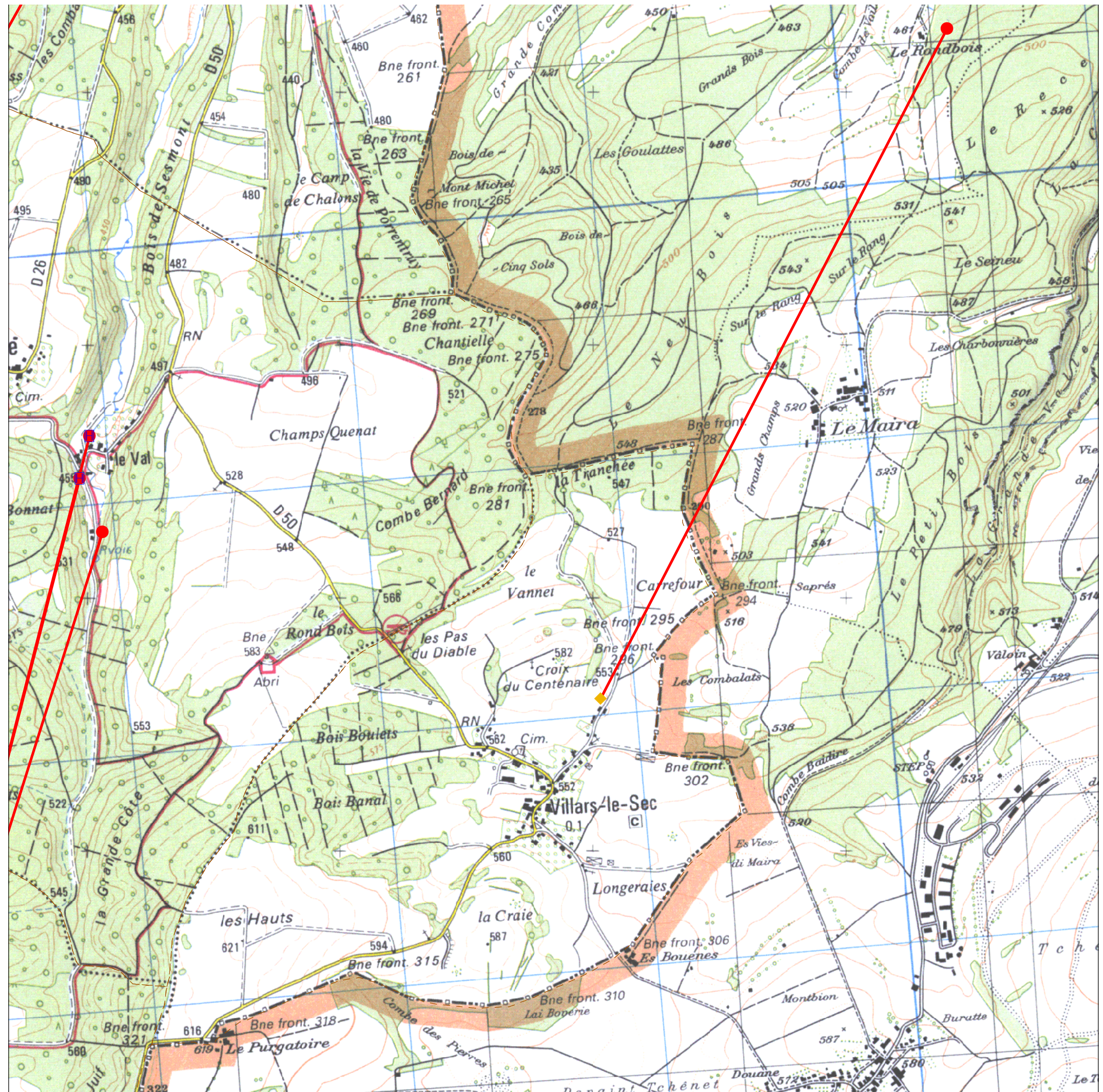


Fichier provisoire  
des circulations souterraines

**LEGENDE**

-  Point d'injection
-  Traçage
-  Point de restitution
-  Limites communales

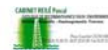
Sources :  
 © Bureaux Etudes (divers)  
 © IGN - SCAN25 - IGN  
 - Paris 2007-protocole MEDAD ©  
 © DIREN Franche-Comté 2009 / BF





# Circulations souterraines reconnues par traçage

INVENTAIRE - DIREN FRANCHE COMTE



COMMUNE INJECTEE : Villars-le-Sec

INSEE : 90105

## Perte du Village

Coord\_X 1000851 Coord\_Y 6714062 Alt. : 560

Commentaires Moyennes Eaux

Date hors norme

Traçage\_ID: Date du traçage Debit Masse Etat hydrologique Traceur: Operateur:

TB012 29/05/1985 4 Eaux Moyennes Fluoresceine CPEPESC

## DESTINATIONS SURVEILLEES CONNUES

Commune	Toponyme:	Alt.	CoordX	CoordY	Rest.	Debit	Dist	Temp
SUISSE	Résurgence de Milandre à Boncourt	467	1E+06	6716698	<input checked="" type="checkbox"/>	0	3000	77