





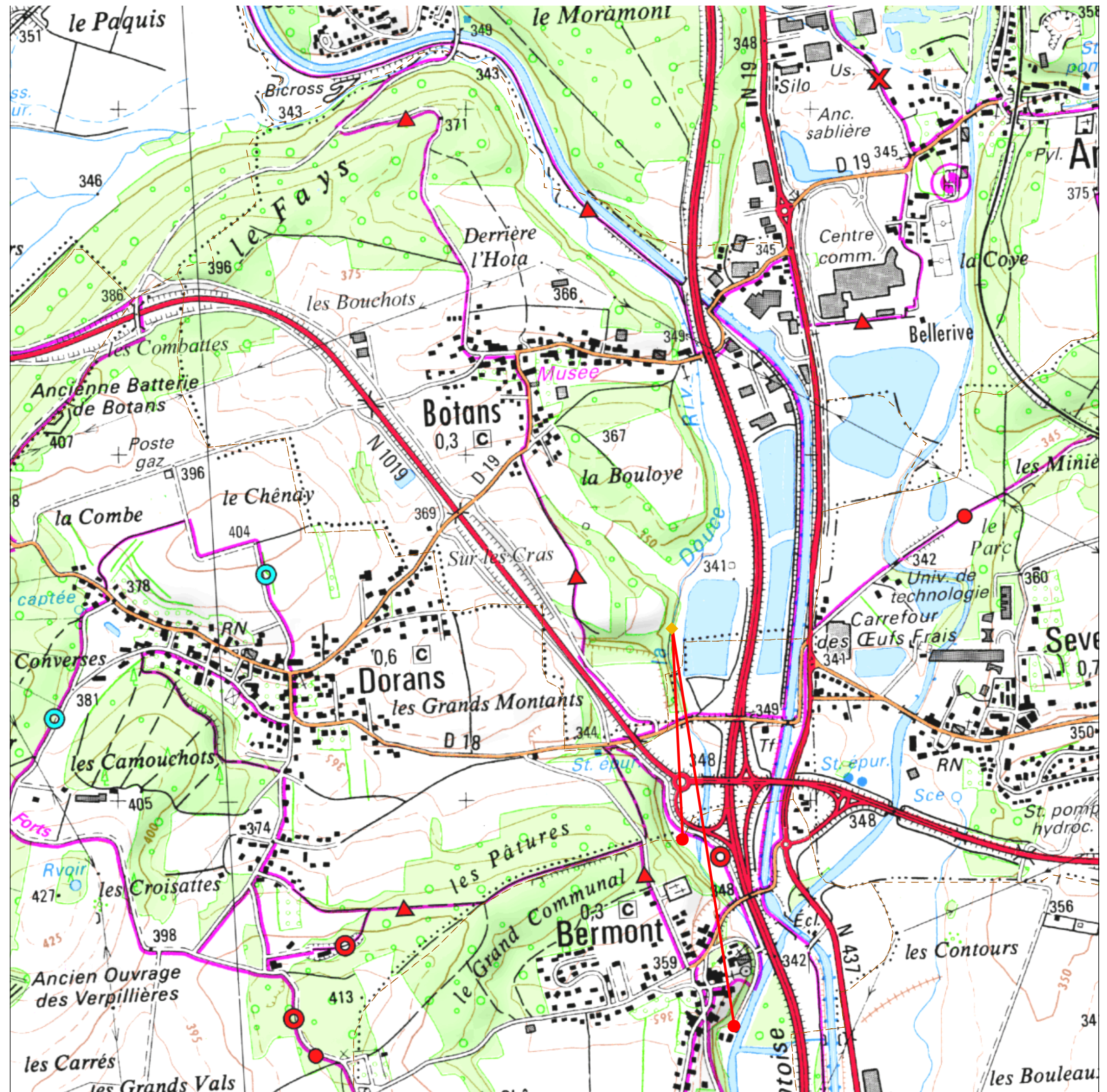


Fichier provisoire
des circulations souterraines

LEGENDE

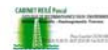
-  Point d'injection
-  Traçage
-  Point de restitution
-  Limites communales

Sources :
 © Bureaux Etudes (divers)
 © IGN - SCAN25 - IGN
 - Paris 2007-protocole MEDAD ©
 © DIREN Franche-Comté 2009 / BF



Circulations souterraines reconnues par traçage

INVENTAIRE - DIREN FRANCHE COMTE



COMMUNE INJECTEE : Botans

INSEE : 90015

Perte de la Douce

Coord_X 989551 Coord_Y 6728050 Alt. : 339

Commentaires *Multi-restitutions en basses Eaux
Injection en Basses Eaux*

Date hors norme

Traçage_ID: Date du traçage Debit Masse Etat hydrologique Traceur: Operateur:

TB004	10/09/1980	3	Eaux Basses	Fluoresceine	SRAE
-------	------------	---	-------------	--------------	------

DESTINATIONS SURVEILLEES CONNUES

Commune	Toponyme:	Alt.	CoordX	CoordY	Rest.	Debit	Dist	Temp
Bermont	Rivière La Douce	337	989575	6727440	<input checked="" type="checkbox"/>	0	610	6
Bermont	Résurgence de la scierie	337	989720	6726899	<input checked="" type="checkbox"/>	0	1160	0